

# ST724 Lady Zip Sweat

270 g/m<sup>2</sup>, isoli



- Quality: 65% cotton / 35% polyester
- Oxford Grey: 74% cotton / 11% polyester / 15% viscose
- Weight: 270 g/m<sup>2</sup>
- Isoli
- Box: 20 pcs., pack: 5 pcs.

The product is LABELFREE and contains only a small size label in the left side of the neck.

Lady Zip Sweat is a form fitted female sweatshirt with a full length zipper, double stitches and stitches on the sides. It has 2 big pockets, wide lycra rib cuffs and a high collar with strings.

## Colors



Black  
Black

White  
White



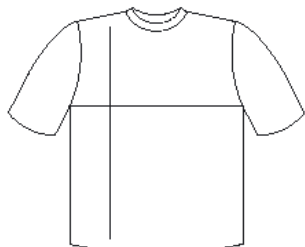
Oxford Grey  
PMS Cool  
Grey 7 C



Red  
PMS 187 C



Violet  
PMS 2695  
C



cm	XS	S	M	L	XL	XXL
1/2 Width	44	46	48	50	52	54
Length	62	65	68	71	74	77

