

# ST402 Long Stretch LS

170 g/m<sup>2</sup>, Single jersey



- Quality: 92% cotton and 8% elastane
- Oxford Grey 77% cotton, 15% viscose and 8% elastane
- Weight: 170 g/m<sup>2</sup>
- Single jersey
- Box: 50 pcs., pack: 10 pcs.

The product is LABELFREE and contains only a small size label in the left side of the neck.

This is a long, tight fitted T-shirt with long sleeves, double stitches, and stitches on the sides. It has a round neck band with tightly woven lycra rib.

## Colors



Black  
Black

White  
White



Oxford Grey  
PMS Cool  
Grey 7 C



Light Yellow  
PMS 393 C



Light  
Turquoise  
PMS 311 C



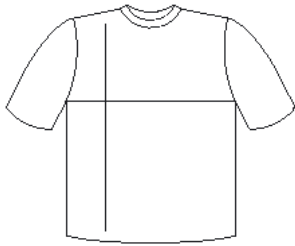
Forest  
Green  
PMS 5605  
C



Violet  
PMS 2695  
C



Pink  
PMS 214 C



cm	XS	S	M	L	XL	2XL
½ Width	33	36	40	44	48	52
Length	66	68	70	72	74	76

