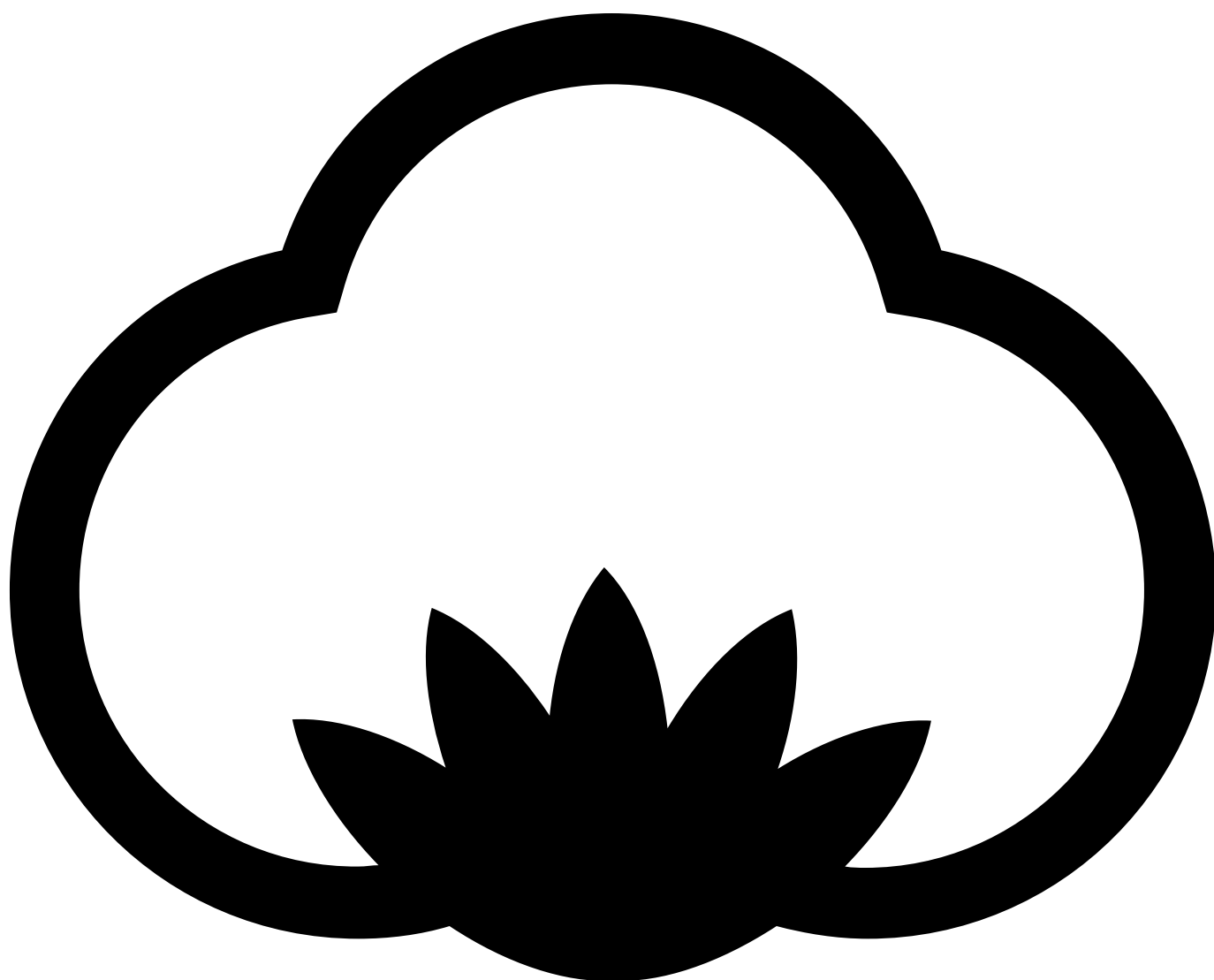


ST306 Mens Tee

165 g/m², Single jersey

Organic



ORGANIC



- Quality: 100% combed and enzyme washed cotton
- Oxford Grey 85% cotton / 15% viscose
- Heather Navy: 60% cotton / 40% polyester
- Weight: 165 g/m²
- Single jersey
- Box: 50 pcs., pack: 10 pcs.

The product is LABELFREE and contains only a small size label in the left side of the neck.

You can easily brand this T-shirt as your own. It is label free and only has a small size label on the left side of the neck. We also call it Brand Yourself.

ST306 Mens Tee is a fitted T-shirt, with side seams. The sleeves are adapted to the fitted look so that the sleeves are emphasizing the upper arms.

Sleeves and bottom are hemmed with 3 threaded flatlock. 3 threaded flatlock make a decorative

detail to the T-shirt. It has 3 straight stitches with zig-zag stitches between on the right side of the T-shirt, it makes the hem more visible than normal twin-needle stitching.

It has a round neckline with 1x1 rib in cotton/elastane and neck tape.

When you have the T-shirt in your hand. You can easily feel the good quality. Single jersey has a smooth surface, which makes the T-shirt look exclusive. The thickness of the fabric 165 g/m² is the most commonly used for T-shirts.

To show a T-shirt in a nice material, fine details and a good fit for your customers helps to promote your sales.

ST306 Mens Tee is designed in a durable quality and can be washed many times without the shape and color are changed essentially.

The surface of the fabric makes it easy to refine the T-shirt with print and embroidery, and easily you have a completely unique product.

Colors



Black
Black



White
White



Oxford Grey
PMS Cool
Grey 7 C



Blue Navy
PMS 533 C



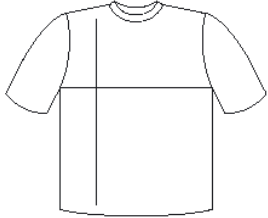
Heather
Navy
PMS 539 C



New Army
PMS 7763
C



Burgundy
PMS 222 C



cm	XS	S	M	L	XL	2XL	3XL
1/2 Width	46	48	50	54	57	60	63
Length	70	73	75	77	79	81	83

