

# ST206 Lady Tee

165 g/m<sup>2</sup>, Single jersey

**Some colors: Organic**



# ORGANIC



- Quality: 100% combed and enzyme washed cotton
- Oxford Grey: 85% cotton/15% viscose
- Weight: 165 g/m<sup>2</sup>
- Single jersey
- Box: 50 pcs., pack: 10 pcs.

The ST206 Lady Tee is a feminine t-shirt that follows the feminine shape.

There is a 1x1 cotton rib with 1.3 cm in height at the neck and sleeve edge. The rib is stitched with a one-needle topstitch.

The side seam helps to create a feminine shape together with the fitted sleeves. The sleeve length stops at the upper part of the upper arm and it finishes with a rib.

The bottom hem is 2.5 cm. with a 7mm double stitch.

The t-shirt is made from one of our most popular cotton fabrics, single jersey 165 g / m<sup>2</sup>. We use this material for most of our t-shirts. The material is known for the following qualities: soft, flexible,

hardwearing, suitable for many washing, good color fastness, minimal shrinkage, smooth and uniform surface.

The product is LABELFREE and contains only a small size label on the left side of the neck.

## Colors

Some colors are also available in extra sizes. See the circles for the availability.

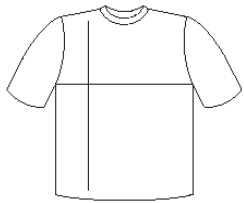
● 4XL ● 5XL



● Black  
● Black



Oxford Grey  
PMS Cool Grey 7 C



cm	S	M	L	XL	2XL	3XL	4XL	5XL
½ Width	42	44	46	48	50	52	54	56
Length	65	67	69	71	73	75	77	79

