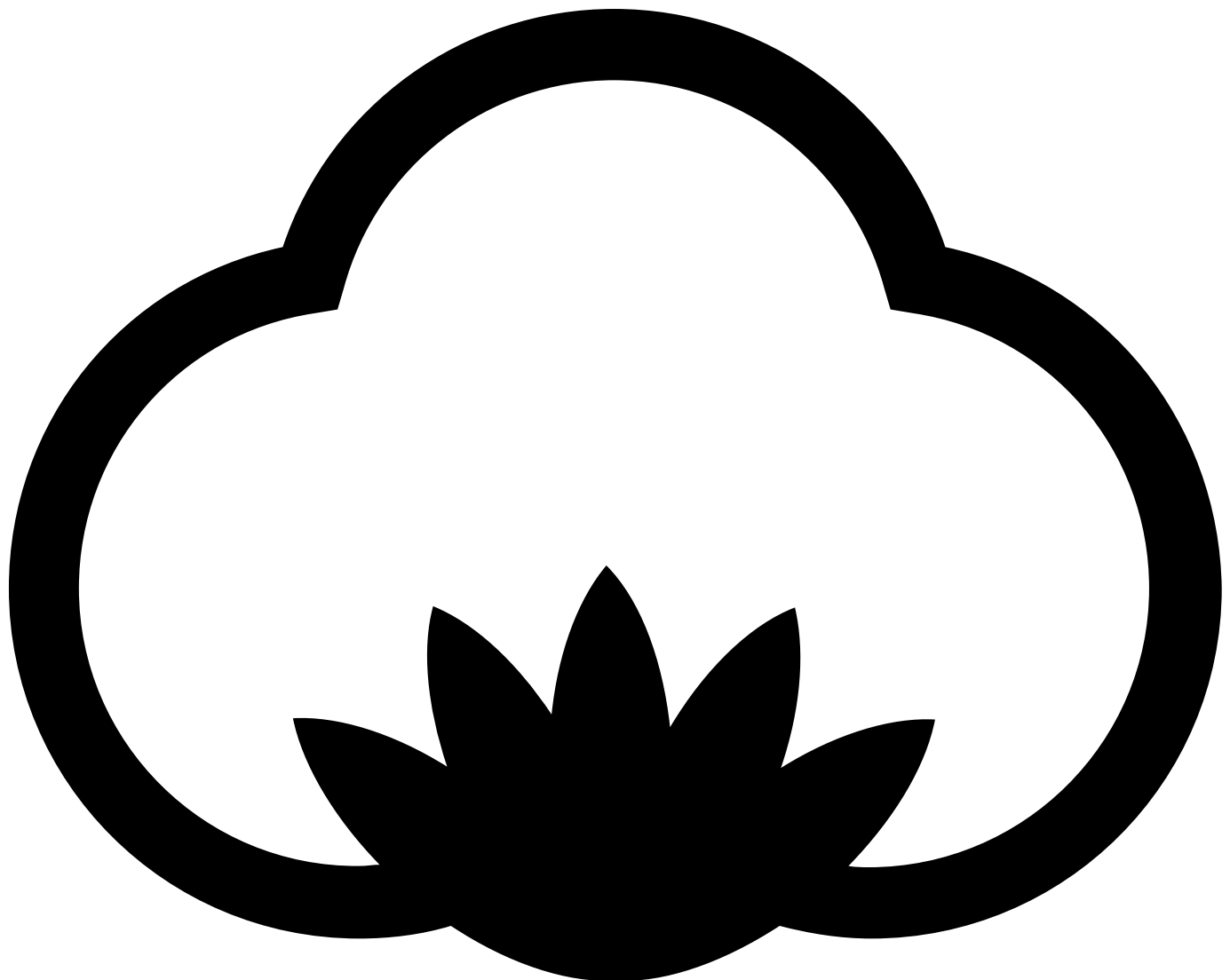


# ST205 Lady Fashion

165 g/m<sup>2</sup>, Single jersey

**Some colors: Organic**



# ORGANIC



- Quality 100% combed and enzyme washed cotton
- Oxford Grey: 85% cotton/15 % viscose
- Weight: 165 g/m<sup>2</sup>
- Single jersey
- Box: 50 pcs., pack: 10 pcs.

The ST205 Lady Fashion is a t-shirt that follows the female figure. The t-shirt has a good length there goes down over the pants' waistband, which many women prefer.

The t-shirt is with a round neckline and a 1.5 cm cotton rib. The neckline is stitched with a single topstitch, to keep the rib in place. The sleeves are feminine with a narrow fit and a length to the top of the upper arm.

Sleeve and bottom have a 2 cm. hem, with a 4 mm twin needle stitch. The armhole has a twin needle topstitch.

The t-shirt is made from one of our most popular cotton fabrics, single jersey 165 g / m<sup>2</sup>. We use this material for most of our t-shirts. The material is known for the following qualities: soft, flexible,

hardwearing, suitable for many washing, good color fastness, minimal shrinkage, smooth and uniform surface.

The product is LABELFREE and contains only a small size label on the left side of the neck.

## Colors



Black  
Black



White  
White



Oxford Grey  
PMS Cool  
Grey 7 C



Turquoise  
PMS 641 C



Petroleum  
PMS 7477  
C



Spring  
Green  
PMS 347 C



Orange  
PMS 1505  
C



Red  
PMS 187 C



Lavender  
PMS 665 C



Burgundy  
PMS 222 C



Light Yellow  
PMS 393 C



Mint  
PMS 351 C



Dark Navy  
PMS 296 C



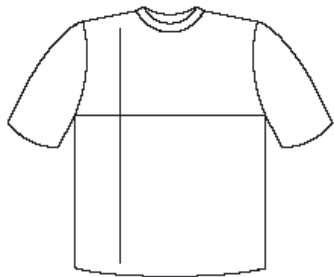
Lime  
PMS 368 C



Violet  
PMS 2695  
C



Pink  
PMS 214 C



cm	XS	S	M	L	XL
½ Width	40	42	44	46	48
Length	67	70	73	76	79

