

ST924 Lady Nord Softshell

300 g/m², 3 layer Softshell



Functional Softshell jacket in 3-layer light quality, with soft microfleece inside.

Functional ladyfit.

Side pockets with zipper.

Extended rounded back, for a sporty and functional look.

Hook and loop closure in sleeves, string closure in bottom for adjustment.

Cell inner pocket with hook and loop closure, and extra inner side pocket in mesh.

- Quality: 100% polyester
- Weight: 300 g/m²
- Softshell
- Box: 10 pcs.

The product is label free and contains only a small size label in the left side of the neck.



3-layer softshell
With microfleece inside



Breathable
4.000g/m²/24h.



Wind-repellent
Inner membrane.



Water repellent
Water column pressure of 10,000mm

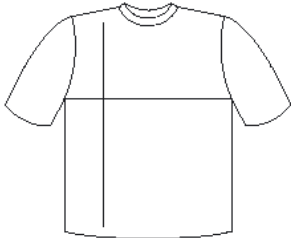
Colors



Black
Black



Blue Navy
PMS 533 C



cm	XS	S	M	L	XL	2XL
½ Width	46	48	52	55	58	62
Length front	63	65	67	69	71	74
Length back	68	70	72	74	76	78

