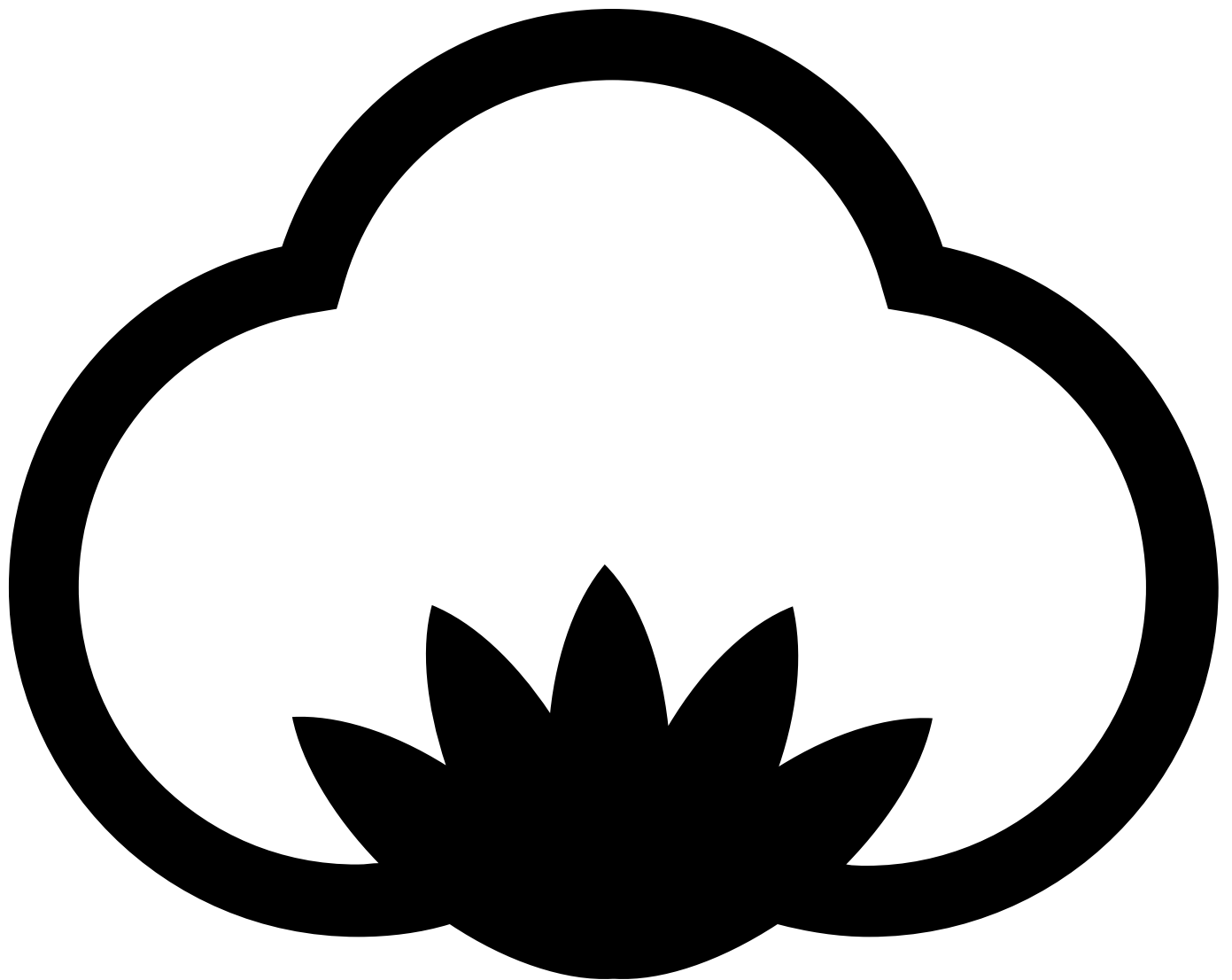


ST810 Lady Stretch Polo LS

220 g/m² Piqué

Some sizes: Organic



ORGANIC



- Quality: 92% combed cotton, 8% elastane
- Weight: 220 g/m²
- Piqué
- Box: 50 pcs., pack: 10 pcs.

If you are into a modern and feminine cut as well as a high-quality material, we can recommend the ST810 Lady Stretch Polo LS.

The polo is made of a pique with elastane, which makes the material more flexible. This model has a fitted cut and long sleeves, the elastane makes it comfortable and follows your body when you move.

The polo has a neckband that is the same color as the fabric with a white decoration stitch in the middle. The white polo has a gray decoration stitch. The same ribbon is on the placket and the polo closes with 5 buttons. A long placket and a small collar help to accentuate the feminine expression.

The collar is in 1x1 rib.

The polo has side seams and slits on both sides. On the inside of the slit, you see the same ribbon as in the neck and placket. It also helps to reinforce the slit, as well as there is a bartack that reinforces the top of the slit, the bartack is white, except on the white polo it is grey.

Sleeves and bottoms are hemmed with a double stitch. The polo is longer on the back piece.

The polo is in good quality and you can refine it with print or embroidery. As well as there is only a small size label on the left side of the neck it creates space for your logo, either with a neck label or neck transfer. We call it Brand Yourself.

If you are looking for a men's model that matches the ST810 Lady Stretch Polo LS we can recommend the ST809 Stretch Polo LS.

We also offer the same models with short sleeves ST807 Stretch Polo and ST808 Lady Stretch Polo.

Colors



Black
Black



White
White



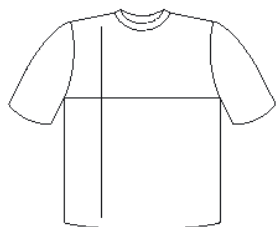
Sky Blue
PMS 657 C



Blue Navy
PMS 533 C



Burgundy
PMS 222 C



| cm | XS | S | M | L | XL | 2XL |
|--------------|----|----|----|----|----|-----|
| ½ Width | 42 | 44 | 46 | 48 | 50 | 52 |
| Length front | 59 | 62 | 65 | 68 | 70 | 72 |
| Length back | 61 | 64 | 67 | 70 | 72 | 75 |

