

ST214 Lady Striped Tee

145 g/m², Single jersey



- Quality: 100 % combed cotton, yarn-dyed
- Heather black/Oxford grey: 80% cotton/20% polyester - 85% cotton/15 % viscose
- Heather black/Heather blue: 80% cotton/20% polyester - 60% cotton/40% viscose
- Oxford grey/Heather blue: 85% cotton/15% viscose - 50% cotton/40% viscose
- Weight: 145 g/m²
- Single jersey
- Box: 50 pcs., pack: 10 pcs.

The ST214 Lady Striped Tee is a refreshing striped t-shirt. The material is yarn-dyed, which means that the yarn is dyed first and then the material is knitted. Therefore, you can also see the stripes on the backside of the fabric.

The fit of the ST214 Lady Striped Tee is the same as our popular ST210 Lady Classic, just with stripes.

The neckline is feminine with a narrow rib. The rib is made with cotton/elastane and is has a twin-needle topstitch.

The t-shirt has side seams and the bottom of the t-shirt has a little extra width that that follows the female figure without the t-shirt becoming loose. The t-shirt has a good length there goes down over the pants' waistband, which many women prefer.

The sleeve has a feminine cut and length. the Sleeves and bottom have a 1.5 cm. hem with a 4 mm. twin-needle stitching.

The t-shirt is made from one of our most popular cotton fabrics, single jersey 150 g / m². We use this material for most of our t-shirts. The material is known for the following qualities: soft, flexible, hardwearing, suitable for many washing, good color fastness, minimal shrinkage, smooth and uniform surface.

The t-shirt has neck tape and only a small size label in the left side of the neck. In the left side seam, there is a small label with the product name and washing instructions. We call it BRAND YOURSELF, ALL PRODUCTS WITHOUT LABEL.

Colors



Heather
Black/Oxford
Grey
Black



Black/White
Black/white



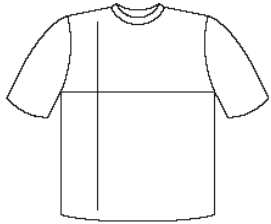
Oxford
Grey/Heather
Blue
PMS Cool
Grey 7 C



Blue
Navy/White
PMS 533 C



Heather
Blue/Heather
Black
PMS 533



cm	XS	S	M	L	XL	2XL	3XL
1/2 Width	42	44	46	48	50	52	54
Length	64	66	68	70	72	74	76

