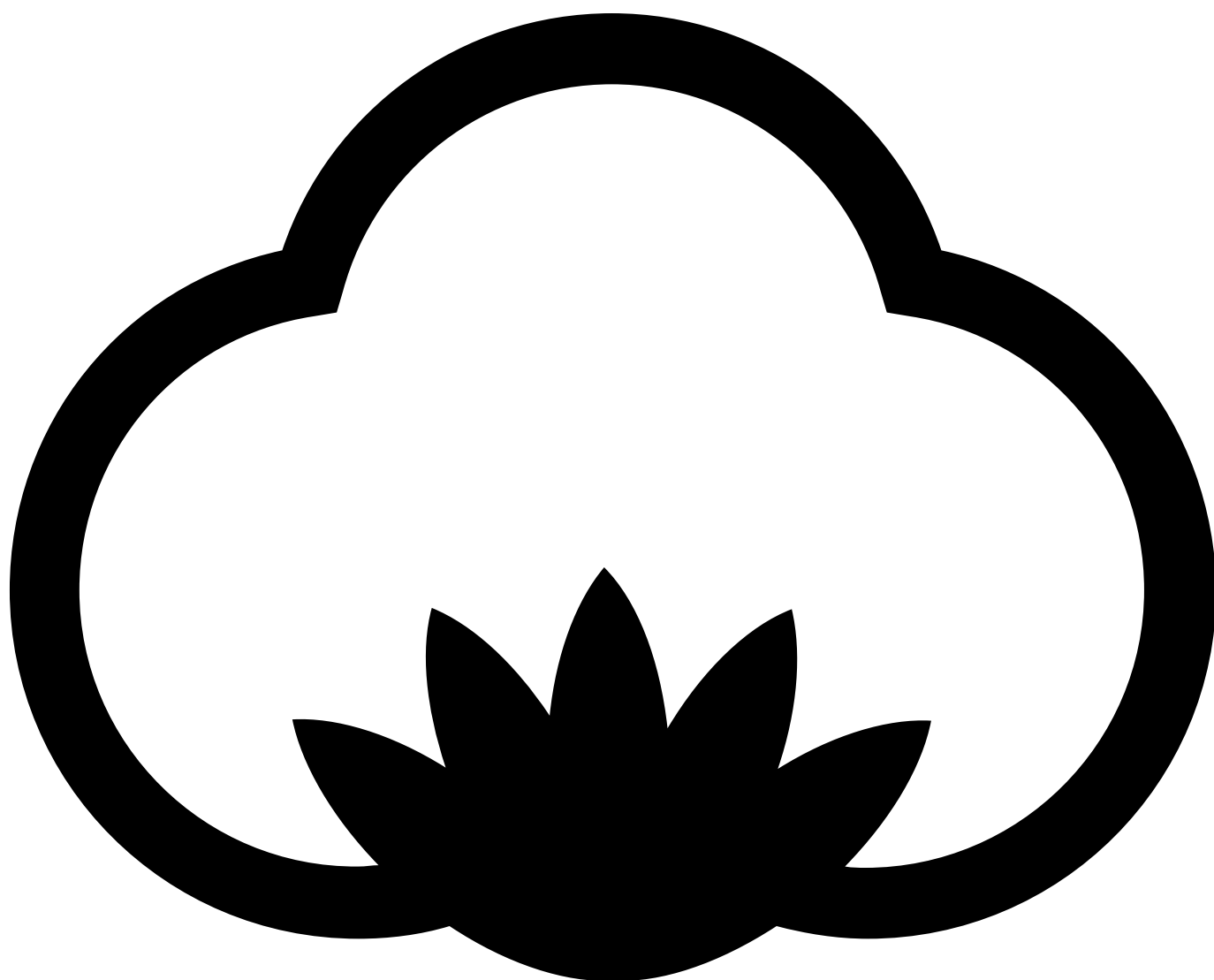


ST300 Raw Tee

145 g/m², Single jersey

Some colors: Organic



ORGANIC



- Quality: 100% cotton
- Oxford Grey: 85% cotton/15% viscose
- Heather Green 65% cotton/35% polyester
- Anthracite, Heather Blue & Heather Burgundy: 60% cotton/40% polyester
- Weight: 145 g/m²
- Single jersey
- Box: 50 pcs., pack: 10 pcs.

ST300 Raw Tee is a Unisex T-shirt that fits well for men, women, and children. The neck opening helps to emphasize a young and raw look, the neckline is made with a ribbon in the same material as the T-shirt. The ribbon is cut up to emphasize the raw look. It is finished with a single stitch around the neckline.

The sleeves have a folded hem of 2 cm which is fixed with stitching in the middle of the sleeve. The bottom of the T-shirt is hemmed with a 7 mm double stitching.

ST300 Raw Tee has only a small size label on the left side of the neck, which means it is label free. Hereby you can easily brand the T-shirt as your own we also call it Brand Yourself.

ST300 Raw Tee is an "easy to wear" T-shirt that fits perfectly to the young modern people, you can buy it from size 2 years to 3XL in 8 different colors. The color New Army is made of certified organic cotton.

Colors



Black
Black



White
White



Anthracite
PMS 426 C



Oxford Grey
PMS Cool
Grey 7 C



New Army
PMS 7763
C



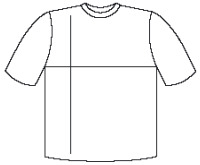
Heather
Blue
PMS 533 C



Heather
Green
PMS 445 C



Heather
Burgundy
PMS 505 C



| cm | 2 | 4-6 | 8-10 | 12-14 | XS | S | M | L | XL | 2XL | 3XL |
|-----------|----|-----|------|-------|----|----|----|----|----|-----|-----|
| 1/2 Width | 30 | 34 | 38 | 40 | 46 | 49 | 52 | 55 | 58 | 61 | 64 |
| Length | 42 | 50 | 57 | 60 | 66 | 68 | 70 | 72 | 74 | 76 | 78 |

