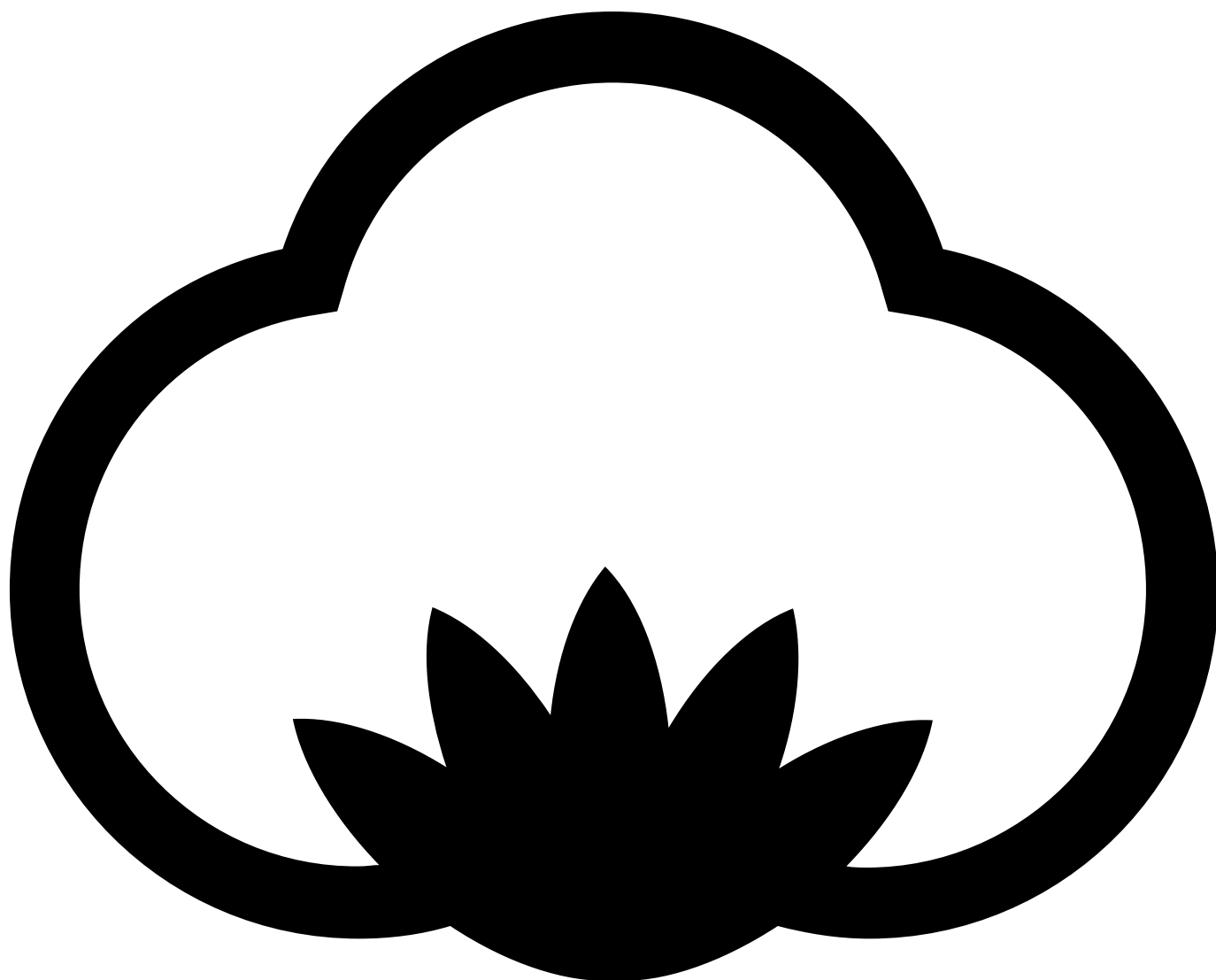


# ST212 Loose Fit Tee

145 g/m<sup>2</sup>, Single jersey

**Organic**



# ORGANIC



- Quality: 100% cotton combed, and enzyme washed.
- Oxford Grey: 85% cotton/15% viscose
- Anthracite, Heather burgundy and Heather blue: 65% cotton 35% polyester
- Weight: 145 g/m<sup>2</sup>
- Single jersey
- Box: 50 pcs., pack: 10 pcs.

ST212 Loose Fit Tee is a loose-fitting T-shirt for women who want a feminine expression. To emphasize the feminine figure, the T-shirt's bottom is curved. It rounds up in the sides, and it is a bit longer at the back than at the front. The bottom of the T-shirt is hemmed with flatlock. The sleeves have a folded hem of 2.5 cm which is fixed with stitching in the middle of the sleeve.

The neckline is feminine without being too deep. The neck edge is finished with a ribbon in the same material as the T-shirt. The ribbon is cut open which gives a contrast to the feminine expression. It is finished with a single stitch round the neck line.

The T-shirt is label free which means that there is only a small size label on the left side of the neck. Thereby you can easily brand the T-shirt as your own we call it also Brand Yourself.

When you buy ST212 Loose Fit Tee you can expect an "easy to wear" T-shirt in 100% cotton, single jersey 145 g/m<sup>2</sup>. It is in a durable quality that can be washed many times without changing shape and color essentially.

You can buy it in sizes XS to 2XL and in 10 different colors. Spring Green, Yellow, Danish Red and Swedish blue are made in certified organic cotton.

## Colors



Black  
Black



White  
White



Anthracite  
PMS 426 C



Oxford Grey  
PMS Cool  
Grey 7 C



Swedish  
Blue  
PMS 300 C



Spring  
Green  
PMS 347 C



Yellow  
PMS 116 C



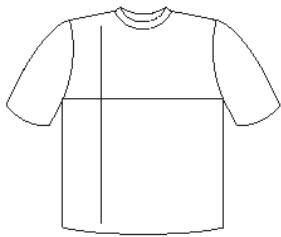
Danish Red  
PMS 200 C



Heather  
Blue  
PMS 533 C



Heather  
Burgundy  
PMS 505 C



cm	XS	S	M	L	XL	2XL
½ Width	44	46	48	50	52	54
Length front	61	63	65	67	69	71
Length back	65	67	69	71	73	75

