

ST209 Lady Carbon Tee

200 g/m², Single jersey



- Quality: 95% combed, enzyme washed and carbon finished cotton 5% elastane
- Weight: 200 g/m²
- Box: 50 pcs., pack: 10 pcs.

The product is LABELFREE and contains only a small size label in the left side of the neck.

A feminine fitted T-shirt with short, tight sleeves and a round neck which has a deeper cut down under the collar bone.

Colors

Some colors are also available in extra sizes. See the circles for the availability.
XL

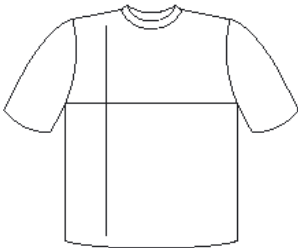


Black

White

Black

White



cm	XS	S	M	L	XL	2XL
½ Width	38	41	43	45	47	49
Length	63	65	67	69	71	73

