

ST804 Work Wear Polo

220 g/m², Piqué



- Quality: 60% cotton and 40% polyester
- Piqué
- Weight: 220 g/m²
- Box: 50 pcs., pack: 10 pcs.

If you need an industrial washable polo, we recommend our ST804 Work Wear Polo. The material used for this polo is 60% cotton / 40% polyester, the polyesters help to make the material stronger and more durable in use and washing.

ST804 Work Wear has a neck tape that goes to the placket there is closed with 3 buttons. The sleeve curve is reinforced, and the sleeves and bottoms are hemmed with a twin needle stitch.

The polo has a classic fit with side seams. If you want your own logo on the polo as print, transfer or embroidery we can also help you with this.

If you need a polo with a breast pocket, we can sew one on the polo. We recommend ST121 Pocket Work Wear Pique which is made in the same materials and colors.

There are many ways to change the product with print, transfer, embroidery or pockets so you can make the product unique to suit your needs. We also call it LABELFREE.

Colors



Black
Black



White
White



Dark Grey
PMS Cool
Grey 10 C



Swedish
Blue
PMS 300 C



New Royal
PMS 287 C



Blue Navy
PMS 533 C



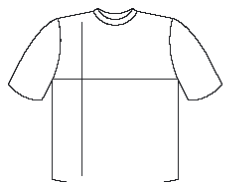
Danish Red
PMS 200 C



Red
PMS 187 C



Sand
PMS 7502
C



cm	XXS	XS	S	M	L	XL	2XL	3XL	4XL
½ Width	44	46	48	52	57	60	62	65	67
Length	66	68	70	73	76	78	80	82	84

