

ST211 Womens Work Tee

220 g/m², Single jersey



- Quality: 60% cotton and 40% polyester
- Weight: 220 g/m²
- Single jersey
- Box: 50 pcs., pack: 10 pcs.

The product is label free and contains only a small size label in the left side of the neck. This T-shirt has a modern, fashionable shape, but at the same time, it is perfect as work wear.

Colors



Black
Black

White
White



Dark Grey
PMS Cool
Grey 10 C



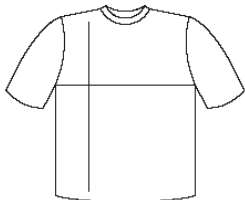
Blue Navy
PMS 533 C



Sand
PMS 7502
C



Red
PMS 187 C



cm	XS	S	M	L	XL	2XL	3XL	4XL
½ Width	38	41	43	45	47	49	51	53
Length	65	67	69	71	73	75	77	79

