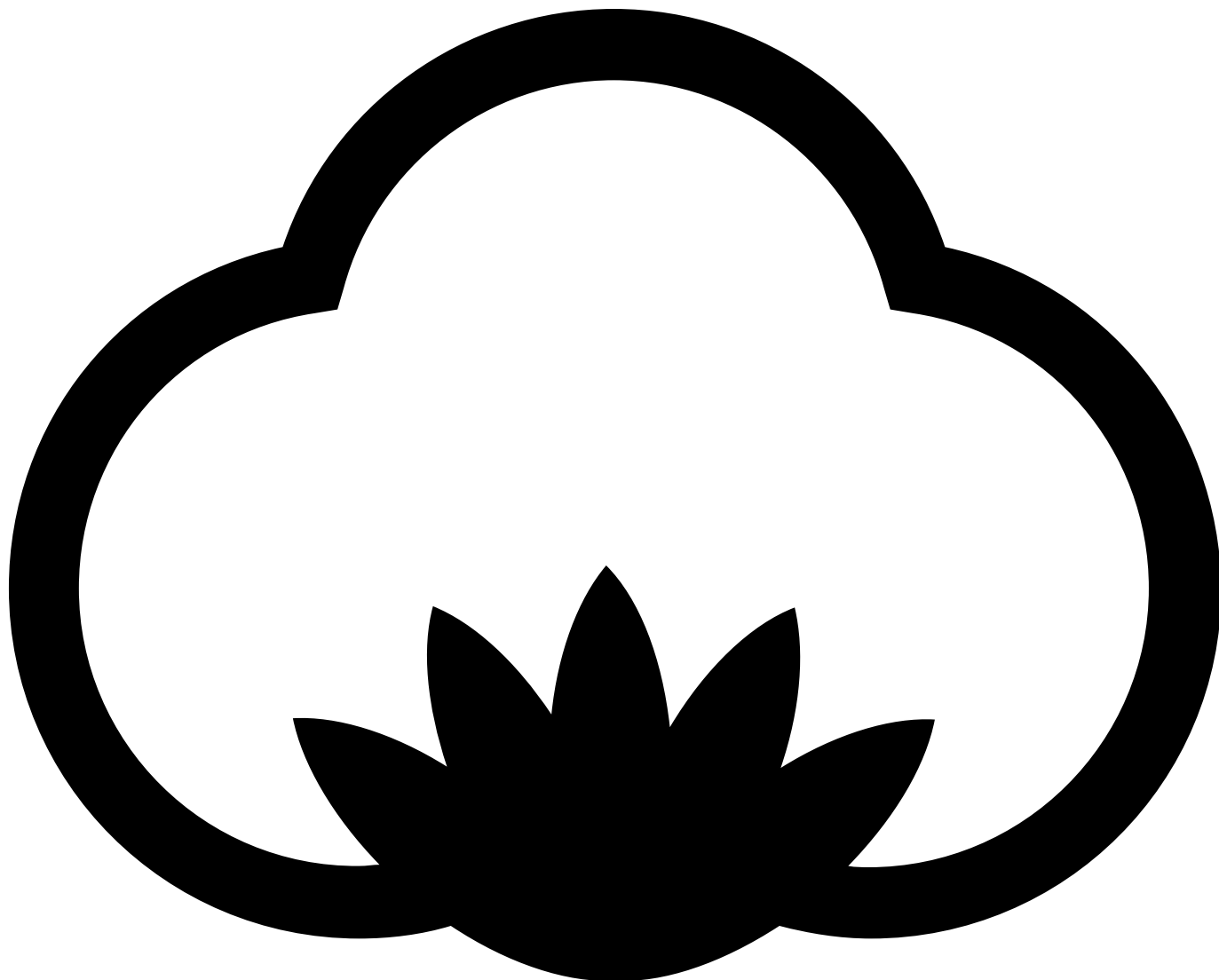


ST208 Lady Fitted

165 g/m², Single jersey

Organic



ORGANIC



- Quality: 100% combed and enzyme washed cotton
- Oxford Grey 85% cotton 15% viscose
- Weight: 165 g/m²
- Single jersey
- Box: 50 pcs., pack: 10 pcs.

The ST208 Lady Fitted is a feminine t-shirt with side seams for a more waisted fit. It has a fitted design but when you compare it to the ST205 Lady Fashion and ST206 Lady Tee which is similar to this t-shirt, the ST208 Lady Fitted more spacious.

The neckline is finished with a 1x1 cotton rib of 1.5 cm.

Sleeves and bottom have a 1,5 cm. hem with a 7 mm double stitch.

The t-shirt is made from one of our most popular cotton fabrics, single jersey 165 g / m². We use this

material for most of our t-shirts. The material is known for the following qualities: soft, flexible, hardwearing, suitable for many washing, good color fastness, minimal shrinkage, smooth and uniform surface.

The product is LABELFREE and contains only a small size label on the left side of the neck.

Colors



Black
Black



White
White



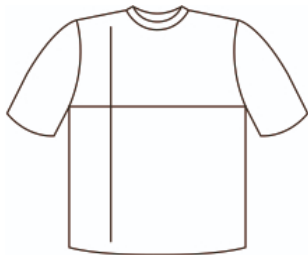
Oxford Grey
PMS Cool
Grey 7 C



Blue Navy
PMS 533 C



Danish Red
PMS 200 C



cm	XS	S	M	L	XL	2XL
1/2 Width	40	43	46	49	52	55
Length	60	63	66	69	72	75

