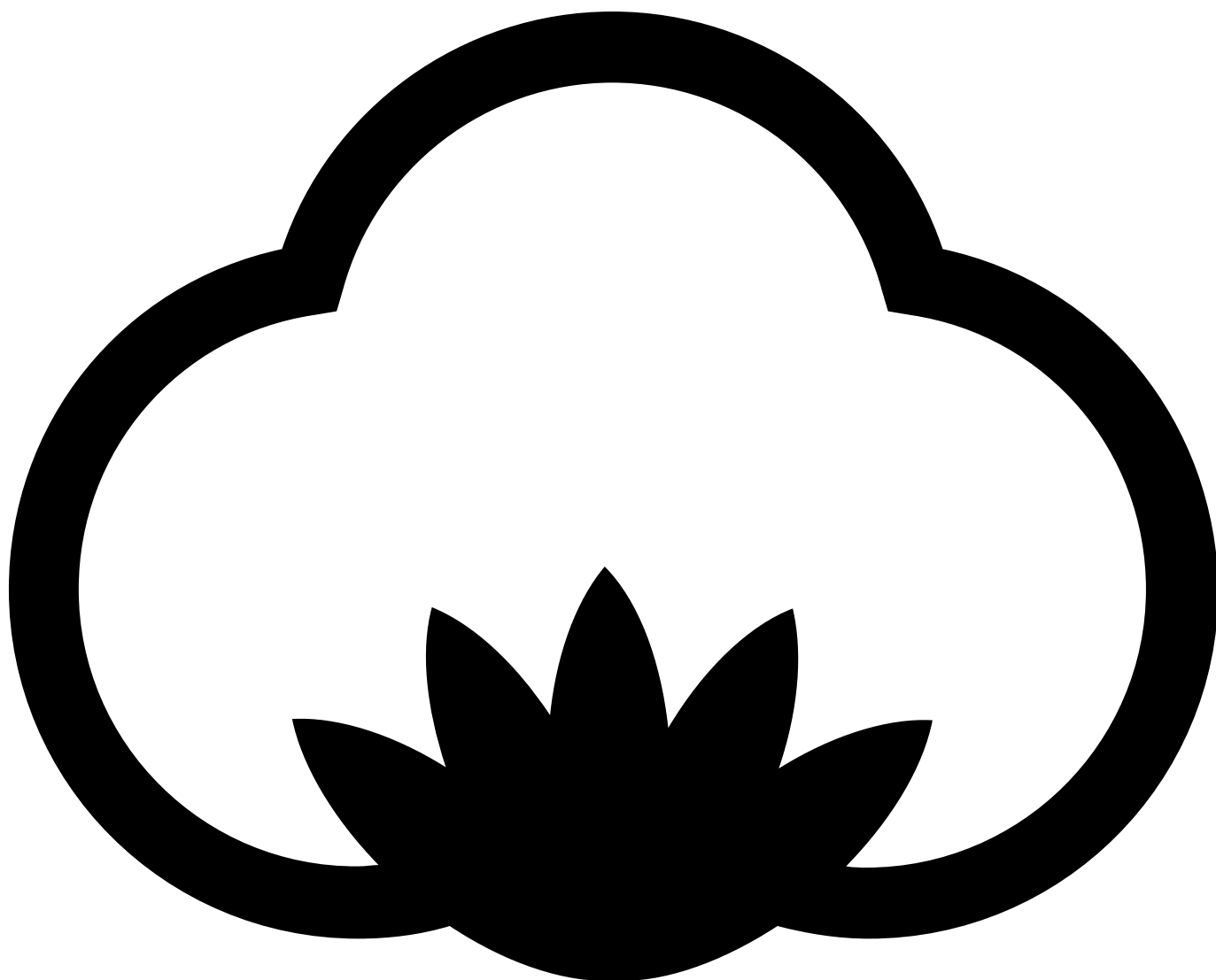


ST310 Mens Fitted

165 g/m², Single jersey

Organic



ORGANIC



- Quality: 100% combed and enzyme washed cotton
- Oxford Grey 85 % cotton 15 % viscose
- Weight: 165 g/m²
- Single jersey
- Box: 50 pcs., pack: 10 pcs.

ST310 Mens Fitted is a classic t-shirt with a slightly fitted cut and side seam. The sleeve is tailored to this cut. Compared to ST306 Mens Tee and ST305 Uni Fashion, ST310 Mens Fitted is slightly shorter than the other two models. The sleeves and bottom are finished with a double seam. The neckline is finished with a 1x1 cotton rib.

The t-shirt is made of one of our most popular cotton materials, single jersey 165 g/m². We use this material for the majority of our t-shirts. The material is known for the following properties: soft, comfortable, flexible, durable, holds up well in the wash, good colorfastness, minimal shrinkage, smooth and uniform surface.

The product is LABELFREE and contains only a small size label on the left side of the neck.

Colors



Black
Black



White
White



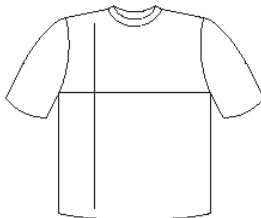
Oxford Grey
PMS Cool
Grey 7 C



Blue Navy
PMS 533 C



Danish Red
PMS 200 C



cm	XS	S	M	L	XL	2XL	3XL
1/2 Width	45	48	51	54	57	60	63
Length	67	69	71	74	76	78	80

